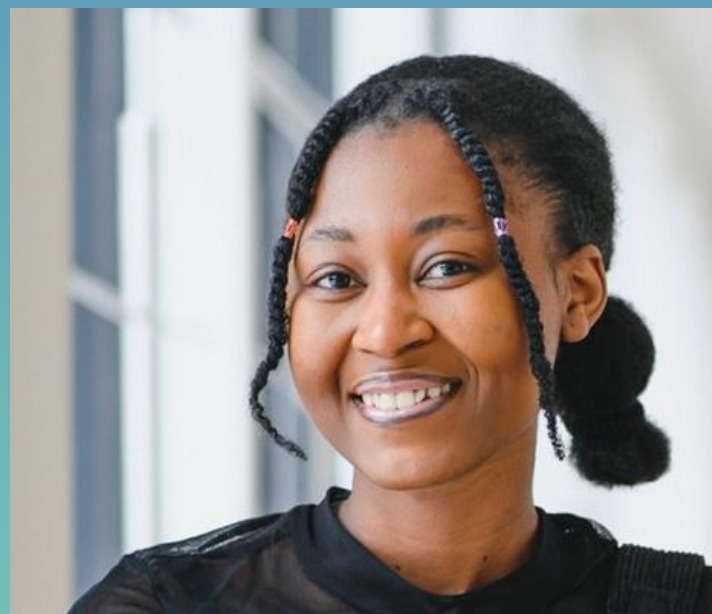
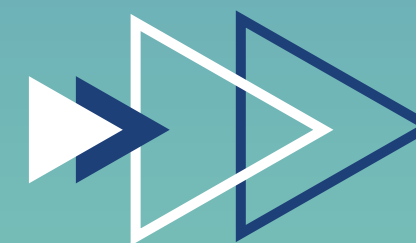


TERTIARY DIFFERENT ROUTE, SAME DEGREE



APPLICATIONS OPEN FROM
FEBRUARY UNTIL MID-SEPTEMBER



 **National** Tertiary Office
Oifig Thrasachta **Náisiúnta**

GO BEYOND

From being focused on points to being focused on people

WHAT IS A TERTIARY DEGREE?

- A degree course that commences in further education with an Education and Training Board (ETB) with a guaranteed pathway to completion in Higher Education Institution (HEI).
- A range of tertiary degree courses are available from Business, ICT, Arts, Engineering, Manufacturing, Construction and Health & Welfare and many more.
- All Tertiary degrees lead to an NFQ level 7 or 8 award.

**TRADITIONAL
DEGREE
ROUTE**

**TERTIARY
DEGREE
ROUTE**

Closing date

Embedded Awards

Applications open until Mid September

No tuition or student contribution fees during study years in ETB

No limit on choices

No fee to apply

Points

No Points

Fees

Smaller class groups

Local

Dual student card

HEI Bursaries

Dual support and services: libraries, sports, academic, health and wellbeing supports

Higher Education SUSI grant

Accommodation

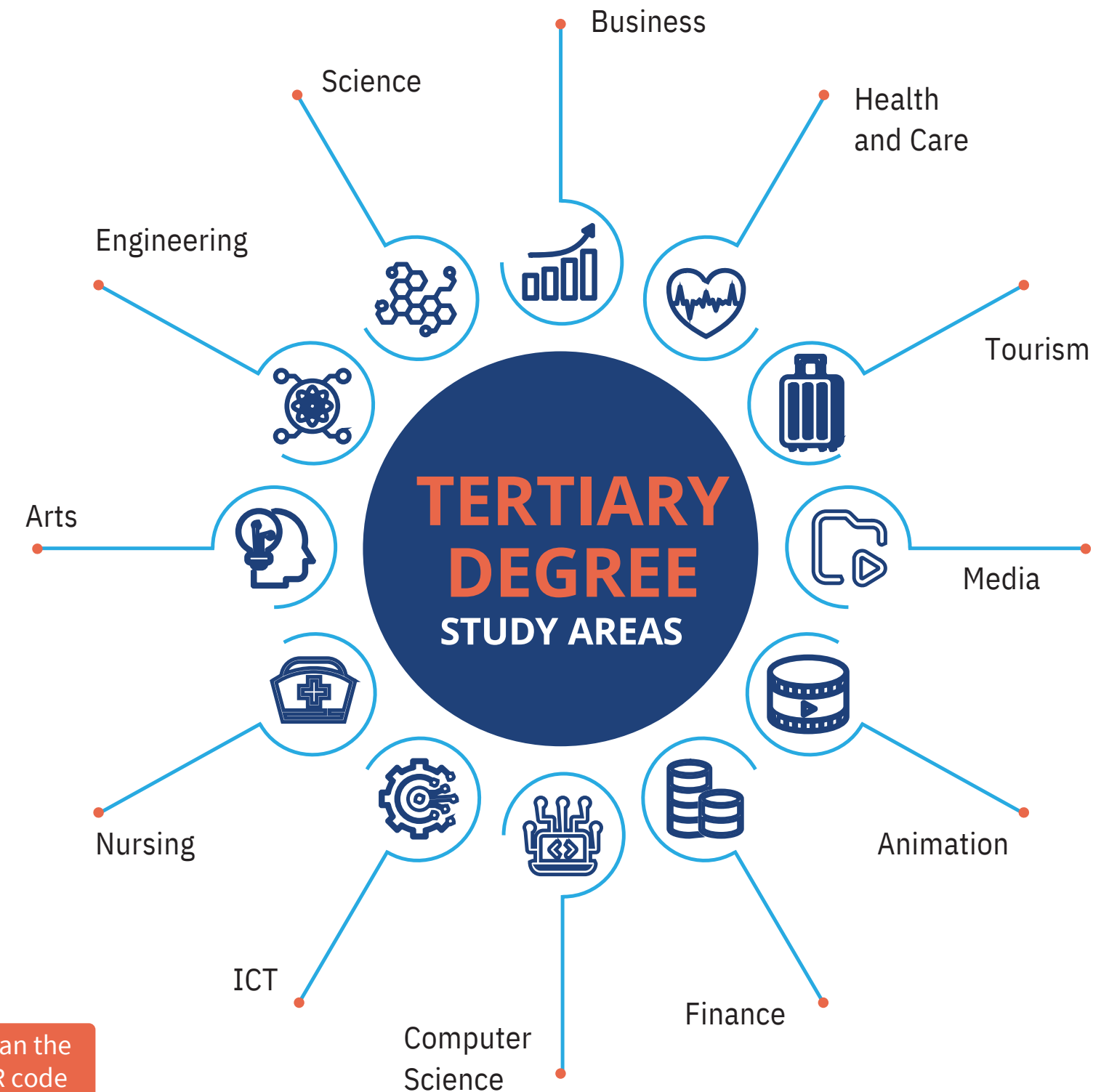
Access to both campuses

TERTIARY DEGREES: POINTS OF UNIQUENESS FOR STUDENTS

- No leaving certificate points required
- Apply directly to NTO.ie
- No tuition or contribution fees while studying at an ETB
- Eligible for HE SUSI Grant Bursaries
- Student Cards and access to all services in both the ETB and HEI including libraries, sports, academic, health and wellbeing supports.
- Smaller classroom sizes
- Study Locally

How do you decide what course is right for you?

The ETB Adult Guidance and Information Service offers impartial and confidential information, advice, guidance, and counselling on the educational options that are available to you, including the tertiary degrees. Contact your local ETB for information on this service.



Scan the QR code



TERTIARY DEGREES EXPAND THE REACH OF HIGHER EDUCATION BY ENABLING NEW GENERATIONS OF TALENT AND SKILLS

TERTIARY

DIFFERENT ROUTE,
SAME DEGREE ▶▶

www.nto.ie



TERTIARY DEGREES: ENTRY REQUIREMENTS

Entry requirements for tertiary degrees are tailored to each course and detailed on individual course pages at nto.ie/courses and have been designed to facilitate access, widen participation, diversify student population and open new doors.

Entry isn't based on Leaving Certificate points but instead looks at student drive, suitability, skills, and ability. This is currently the only direct entry pathway for school leavers into NFQ level 7/8 outside of the traditional entry route.

Tertiary Degrees have a combination of multiple entry options (i.e. Leaving Cert, LCA, mature students, RPL, based on personal statement and interview). These were designed to create the most equitable access possible for a wide range of applicants. Not a 'one size fits all' approach; instead, it is more student-centric and student-led.

Entry Requirements may include:

- Specific subject requirements – e.g. a Bachelor of Science degree might require experience of studying science subjects.
- A portfolio of work.
- A personal statement or interview.
- Relevant work experience.

Tertiary Degrees: Application Process



Application submitted via NTO.ie



Request for additional applicant details or supporting documents issued if required.



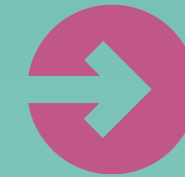
Applicant attends interview / engagement.



Provisional offer issued.



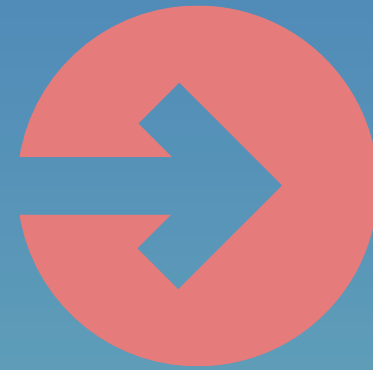
Applicant confirmation of acceptance of provisional offer.



Final confirmed offer issued.

TERTIARY DEGREE FEATURES

No Leaving Certificate Points System




Entry requirements for tertiary degrees are never based on a points system. Instead, we've tailored entry requirements to what you'll really need to succeed for each tertiary degree. Sometimes that means certain subject requirements, or applying with a portfolio, or even an interview. Entry requirements are different for each degree, so check the course page to be sure.

Student Supports



There are no college fees at the ETB level. Students can apply for the SUSI HE grants throughout a tertiary degree, including while studying at ETB campus. Students can also access the services and supports of both the ETB and the HEI throughout a tertiary degree. This includes libraries, sports facilities, and academic, health and wellbeing supports. You'll have a student card for both the ETB and the HEI from day 1 of your degree.



 Scan the QR code

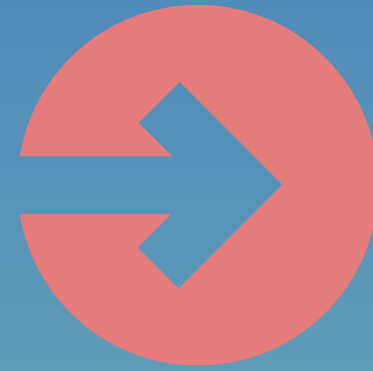
Embedded Awards



The Tertiary Degree programmes are designed to support academic success despite challenges that may arise. However, if a student has to leave the programme before completing the final year, tertiary degrees include embedded awards. These awards formally recognise learning achieved during time in the programme. The embedded awards vary for each course, so check the individual course page for the tertiary degree you're interested in.

TERTIARY DEGREE FEATURES

Local Start



Tertiary Degrees are offered by 15 ETBs (over 25 FET campuses), partnering with 9 HEIs (over 15 campuses). New locations will be added every year. Students may start their degree locally with an ETB, with guaranteed progression to HEI, (which might be further away). This may mean you won't have to move away from where you live just to get started on your undergraduate journey, reducing costs and stress in your first year of study.

Seamless Progression



A tertiary degree offers a seamless pathway from a further education setting with an ETB to a higher education setting with a HEI, all housed within one application process. There is guaranteed progression, subject to successfully completing assessments, through the degree. That progression is supported by visits and/or lectures at the HEI, so that students know what to expect when they move from the ETB setting to the HEI setting.

Dream Degree to Dream Career



All new tertiary degrees are designed around gaps in the Irish job market. We want passionate students to sign up for a qualification, knowing there are many job opportunities waiting for you at the other end.

**TERTIARY
DIFFERENT
ROUTE, SAME
DEGREE**

**GO
BEYOND**



Contacts:

Email: info@nto.ie

Website: www.NTO.ie

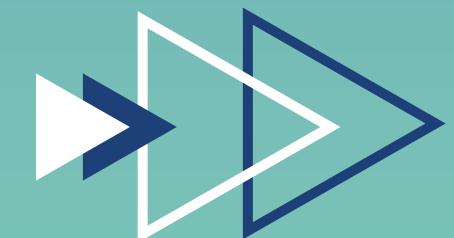
LinkedIn: www.linkedin.com/in/ntoireland/

Facebook: [National Tertiary Office](https://www.facebook.com/NationalTertiaryOffice)

Instagram: [@ntoireland](https://www.instagram.com/ntoireland)



www.nto.ie



 **National** Tertiary Office
Oifig Thrasachta **Náisiúnta**